

SILVERSEA®  
TO FINDING MORE

BEHOLD  
THE WONDER.



BECOME  
THE MUSE.

Für Silversea Kreuzfahrten gibt es Experten: uns!



[www.silversea-kreuzfahrten.de](http://www.silversea-kreuzfahrten.de)





Scan the QR code to learn more  
about the Silversea experience.

# CONTENTS

5

---

## WHY SILVERSEA

Unmatched access to the world	6
Service that's second to none	7
Everything that matters, included	8
Dining defined by discovery	9
Small ships, endless wonder	10

12

---

## DESTINATIONS

Explore every corner of the world	14
-----------------------------------	----

19

---

## LONG VOYAGES

World Cruise	19
Grand Voyages	23

27

---

## DESTINATION EXPERIENCES

Inmersive events and festivals	28
Land Programs by Silversea	29
City Stays by Silversea	30
Shore Excursions on Classic Voyages	31
Go farther than even before	32
Shore explorations on Expedition voyages	33

34

---

## THE SOUTHERNMOST HOTEL ON EARTH

37

---

## SILVERSEA FLEET

Classic fleet	38
Nova Class	39
Expedition fleet	40
Silver Endeavour	41
Classic fleet ships	42
Expedition fleet ships	43

44

---

## THE ONBOARD EXPERIENCE

So much to savor	44
Drinks that raise the bar	45
The flavors of S.A.L.T.	46

48

---

## ONBOARD ENTERTAINMENT

50

---

## RELAXATION & RESTORATION

52

---

## THE LUXURY OF CHOICE

54

---

## VENETIAN SOCIETY

55

---

## STATUS WITHOUT BOUNDARIES



SILVER MUSE, MYKONOS



*Why Silversea*

---

# SILVERSEA BRINGS THE WORLD CLOSER

Here's to channeling the spirit of discovery. To charting new paths that awaken your sense of wonder. To discovering the once-in-a-lifetime — time and time again. Explore over 900 destinations across all seven continents on board small ships that set the standard for elite ocean travel. From faraway frontiers to historical havens, voyages with Silversea® are defined by **infinite exploration, the best service at sea, all-inclusive indulgences, incomparable culinary experiences, and intimate ships that yield grand discoveries.** Here's to finding fresh perspectives in unfamiliar places. To meeting fellow travelers who share your passion for exploration. To Finding More.



LEMAIRE CHANNEL, ANTARCTICA

## UNMATCHED ACCESS TO THE WORLD

Silversea unlocks more places than any other travel brand, with journeys to over 900 destinations. From the glacier-carved fjords of Antarctica to lantern-lit harbors in Asia, sun-dappled shores in the Mediterranean, and unspoiled isles in The Galápagos, our intimate ships go where few can. Glide into ports unreachable by larger vessels, explore farther with Combination Voyages, and arrive in time for the world's most unforgettable events. Every itinerary heightens your connection with the regions you visit and the stories they hold.



## SERVICE THAT'S SECOND TO NONE

Service on a Silversea voyage is as personal as it is intuitive. On board, butlers anticipate your every need, bartenders recall your favorite cocktails, and each interaction reflects our pride in the art of hospitality. A ratio of nearly one crew member for every guest ensures your journey feels tailored to you, while a bespoke pillow menu or a hot bath drawn after a day of discovery make even the smallest details memorable.



## EVERYTHING THAT MATTERS, INCLUDED

All-inclusive means more with Silversea. Destination-inspired dining, premium beverages, complimentary Wi-Fi, a cutting-edge fitness center and spa, and engaging experiences that inspire and entertain are all part of your voyage. Unwind in the Otium Spa sauna as you glide past glaciers. Expand your perspective with guest lectures after exploring ruins. Delight in brilliant performances that bring local culture from shore to ship. Every comfort you could imagine is included – along with countless touches you'd never expect.



## DINING DEFINED BY DISCOVERY

With ten exquisite restaurant concepts, Silversea offers more dining options than any other small-ship cruise line. From French gastronomy to pan-Asian fusion, each meal on board brings destinations to life, while our signature S.A.L.T. Sea And Land Taste program reflects your voyage through locally inspired menus and cooking collaborations with regional chefs. Complementing every culinary experience, our ships' vibrant bars and lounges encourage conversations over handcrafted cocktails and rare spirits that reflect the character of every place you visit.



## SMALL SHIPS, ENDLESS WONDER

The world feels larger when you sail on ships this intimate. Our all-suite fleet offers fewer than 364 suites per ship – all ocean-facing and most with private verandas – creating a rare sense of personal space and serenity at sea. Spanning four distinct classes, it's the youngest and most innovative fleet in the industry. From the groundbreaking design of *Silver Nova*<sup>®</sup> to the polar-grade engineering of *Silver Endeavour*<sup>®</sup>, each ship brings style, comfort, and luxury to the world's farthest reaches.

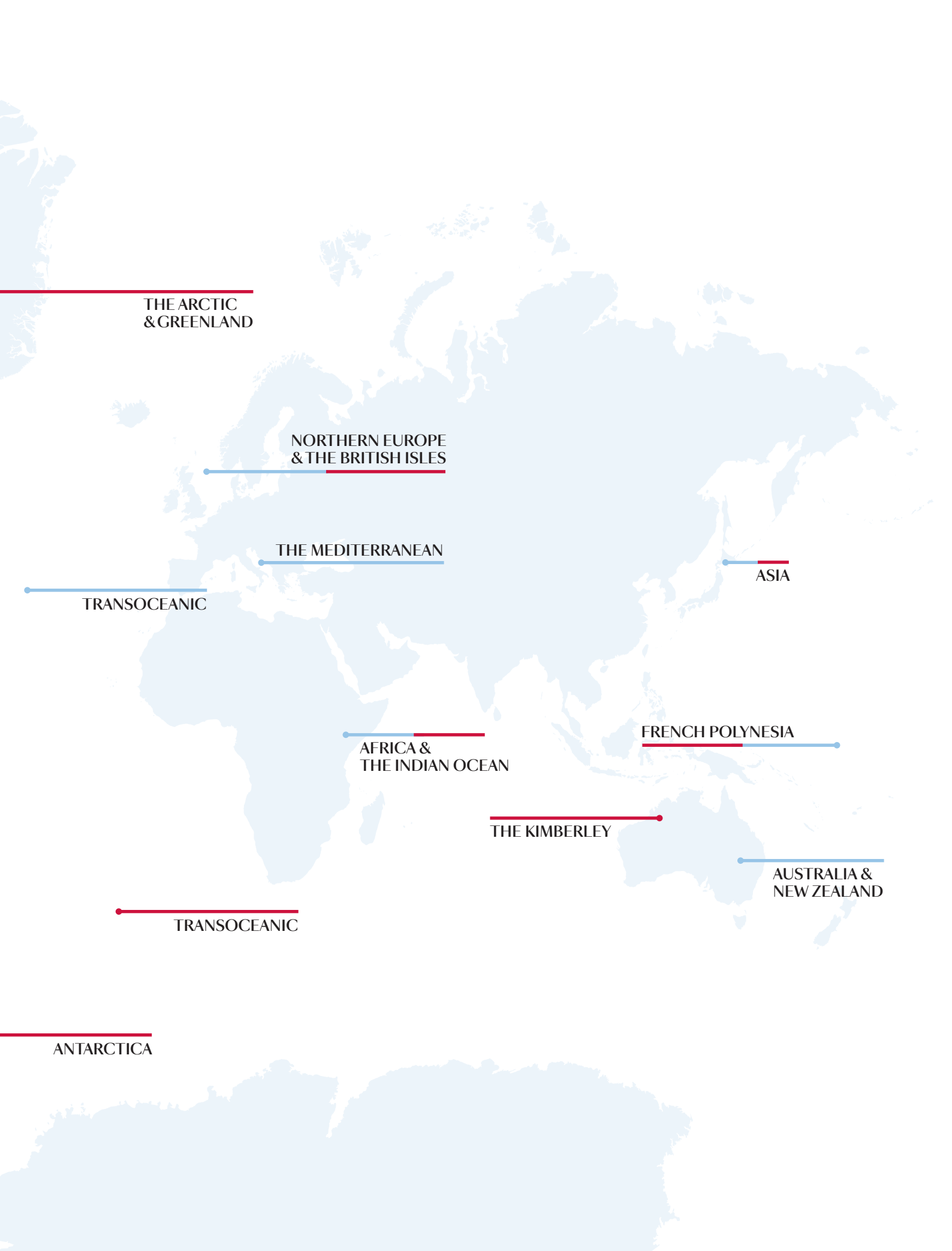


*Destinations*

# VOYAGES ON ALL SEVEN CONTINENTS



CLASSIC  
EXPEDITION



THE ARCTIC  
& GREENLAND

NORTHERN EUROPE  
& THE BRITISH ISLES

THE MEDITERRANEAN

TRANSOCEANIC

ASIA

AFRICA &  
THE INDIAN OCEAN

FRENCH POLYNESIA

THE KIMBERLEY

AUSTRALIA &  
NEW ZEALAND

TRANSOCEANIC

ANTARCTICA

# EXPLORE EVERY CORNER OF THE WORLD



## MEDITERRANEAN

---

This storied region brims with art, history, and natural beauty. Roam cobblestoned streets rich in UNESCO sites, wander charming seaside villages, and explore idyllic harbors from Seville to Salerno, the French Riviera to the Grecian Isles – all with incomparable comfort and access.



## CARIBBEAN & CENTRAL AMERICA

---

Rose-colored beaches, emerald jungles, and aquamarine waters set the scene in the tropics. Hike through cloud forests in Costa Rica, stroll virgin shores in St. Lucia, and rediscover familiar isles from Barbados to Bonaire and everywhere in between, uncovering the local rhythms that define this beloved region.



## ASIA

---

Tropical shores shimmer in Thailand and Malaysia, ancient temples stand beside striking, futuristic skyscrapers in China, and Japan beckons with the soft blush of cherry blossoms and the beat of taiko drums. Engage with Eastern flavors and philosophies on voyages that bring Asia to life.



## ALASKA

---

See nature at its most majestic in Alaska, where snow-capped peaks, dramatic fjords, and evergreen forests teem with wildlife. Glide past glaciers, watch for whales, and explore remote frontier towns before returning to ships where untamed adventure yields to effortless indulgence.





## AFRICA & INDIAN OCEAN

Discover a world where vibrant cultures and unspoiled nature converge. Thrill to the drama of Africa's rugged coasts and sweeping savannahs. Journey across the Indian Ocean to temples honoring sacred traditions. Silversea offers seamless exploration and unique immersion in this remarkable region.



## AUSTRALIA & NEW ZEALAND

Australia and New Zealand weave a tapestry of wonder. Catch captivating performances at the Sydney Opera House, shop bustling markets in Tasmania, marvel at Kangaroo Island's wildlife, and trek the wildlands of this one-of-a-kind region. Along the way, authentic encounters with locals and landscapes inspire lasting memories.



## CANADA & NEW ENGLAND

Discover Canada and New England in fall on board one of our most intimate Classic ships, *Silver Shadow*<sup>®</sup>. Sail to charming ports and iconic cities – from Quebec to Boston – immersing yourself in vivid foliage, local culture, and once-in-a-lifetime experiences.



## FRENCH POLYNESIA & PACIFIC

Turquoise seas and kaleidoscopic reefs define the islands of the South Pacific. Explore the remote shores of French Polynesia, Melanesia, Micronesia, and Easter Island, chasing adventure on land and beneath the waves in one of the most captivating corners of the world.





## NORTHERN EUROPE & THE BRITISH ISLES

---

From black-sand beaches and Viking strongholds to fairytale castles and cathedrals, Northern Europe enchants at every turn. Voyage to volcanic isles and medieval harbors, exploring destinations immortalized in myth. With rare access and tailored excursions, Silversea takes you deeper into these legendary lands.



## SOUTH AMERICA

---

Trace the curve of South America on a journey shaped by changing skies and rugged coasts. From Chile's fjords and Patagonia's glaciers to the colors of Rio de Janeiro during Carnival, there's nothing quite like the breathtaking scenery and cultural contrasts of this continent.



## TRANSOCEANIC

---

Traverse the brilliant blue waters between Asia and Alaska, or follow historic routes across the Atlantic from Funchal to Fort-de-France. Our Transoceanic Voyages embrace the art of slow travel, where every moment is elevated through culture, community, and the renowned comfort and service that define Silversea.



## ANTARCTICA

---

Journey to Antarctica, where nature reigns supreme. Trace the frozen coastline from the South Shetlands to the Antarctic Sound. Watch whales breach in crystal waters, step ashore among penguin colonies, and brave the Polar Plunge — all under the guidance of our seasoned expedition team. Every moment here is once-in-a-lifetime, every horizon unforgettable.





## ANTARCTICA FLY CRUISE

Fly over the Drake Passage on an Antarctica Fly Cruise<sup>SM</sup> directly to The Last Continent. Navigate Pleneau Bay's icebergs, trek to the geothermally heated waters of Pendulum Cove, and encounter penguins, seals, and albatross on expert-led excursions. With off-the-grid exploration and exclusive comforts, every moment leaves a lasting mark.



## THE KIMBERLEY

Ruled by winds and tides for millennia, the Kimberley is a region of boundless beauty. Absorb the majesty of crimson gorges and ancient sandstone domes, and the wonder of Montgomery Reef. Explore Aboriginal lands rich with stories, where rich cultural heritage endures in the wilderness.



## THE GALÁPAGOS ISLANDS

This unspoiled archipelago is a living museum of evolution, where every species reveals something fascinating. On board a ship purpose-built to navigate this region, sail past vivid volcanic landscapes and encounter rare wildlife up close with expert guidance and deep local connections.



## ARCTIC & GREENLAND

From Iceland to Svalbard and Greenland to Canada, the Arctic stirs the soul with its rugged allure. Spot seals on the ice and race through silent fjords on Zodiac<sup>®</sup> excursions led by Expedition Experts – then return to intimate ice class ships appointed with every comfort.







*Long Voyages*

---

## WORLD CRUISE

There is no finer way to see the world than on a Silversea World Cruise. With extended stays, overnight calls, and exclusive events, each voyage immerses you in the customs of cultural capitals and hidden gems alike — savoring local flavors, tracing age-old traditions, and uncovering the authentic identity of each destination. Discover the world on small, elegant ships where exceptional cuisine, intuitive service, and warm hospitality set the tone between unforgettable days onshore. Expert-curated excursions add context to every encounter, revealing each region’s heritage, past, and natural beauty.



SAMPLE WORLD CRUISE VOYAGE 2027

## WORLD CRUISE 2027

Our 2027 World Cruise crosses the Atlantic, Pacific, and Indian Oceans to explore the rhythms and unveil the secrets of each. Set sail on *Silver Dawn*<sup>®</sup> to visit more places than ever before, including 20 new destinations for a Silversea World Cruise. With curated experiences that take you deeper into the soul of each place you visit, you'll gain a new perspective on these three oceans and our connection to them.



## WORLD CRUISE BENEFITS

- Business Class Air (from selected countries/gateways)<sup>1</sup>
- Meet and greet<sup>2</sup>
- Bon voyage reception, dinner, and overnight accommodation pre-embarkation
- Shore Excursions Credit
- \$500 onboard spending credit per guest (up to \$1,000 per suite)
- Exclusive World Cruise events
- Special commemorative gifts
- Silver Shore Baggage Valet (up to 2 bags, 50lbs each, per guest)
- Laundry service
- Unlimited premium Wi-Fi (up to 2 devices per person)
- Medical service<sup>3</sup>

1 - Only with the All Inclusive Plus fare | 2 - At the airport of arrival | 3 - For World Cruise 2028 bookings, medical services including consultations with the ship's medical team, initial visits and check-ups for chronic conditions as well as lab tests, dressings, and medications not to exceed a total cost of \$1,000 USD are included for all passengers. Passengers are responsible for all lab tests, dressings, and medications in excess of \$1,000 USD as well as prescription medications, refills, and additional tests that may require arrangements at the next available port.



## WORLD CRUISE 2028

Discover the joy of life in the moment on our Silversea World Cruise 2028. Voyage across five continents on board the intimate Silver Shadow, offering unique access to hidden harbors and faraway lands. From the prehistoric glaciers of Chile to the futuristic skyscrapers of Dubai, journey at a pace that lets you feel the pulse of each destination. Uncover legends of lost cities. Learn the ways of the locals. Dance until dawn at Rio's Carnival. In every sight, sound, and sensation lies an invitation to celebrate the poetry of presence.



The journey of a lifetime could be yours. Scan the QR code to learn more.



SOHOTON COVE, PHILIPPINES



## GRAND VOYAGES

A Grand Voyage with Silversea is a remarkable way to explore the world's most fascinating regions, both iconic and off the beaten path. Spanning up to two months, each of these comprehensive journeys focuses on a specific part of the world — bringing together profound cultural immersion, enriching and intimate Shore Excursions, and an unrivaled onboard experience. Extended itineraries, multiple overnights, and access to lesser-known destinations foster meaningful connections with the places you visit and the people you meet throughout your voyage. Exclusive Grand Voyage events — a Silversea highlight — offer private access to cultural gems few get to experience.



GREAT WALL, CHINA



RIO DE JANEIRO, BRAZIL



RAVENNA, ITALY

## GRAND VOYAGES BENEFITS

---

- Bon voyage reception on board
- \$500 onboard spending credit per guest (up to \$1,000 per suite)
- Curated shoreside events
- Shore Excursions credit
- Luggage service
- Laundry service
- Unlimited premium Wi-Fi
- Medical service<sup>1</sup>

<sup>1</sup>Medical services including consultations with the ship's medical team, initial visits and check-ups for chronic conditions as well as lab tests, dressings, and medications not to exceed a total cost of \$1,000USD are included for all passengers. Passengers are responsible for all lab tests, dressings, and medications in excess of \$1,000USD as well as prescription medications, refills, and additional tests that may require arrangements at the next available port. All other standard inclusions apply.

## **GRAND MEDITERRANEAN, 2026 & 2027 – CLASSIC VOYAGE**

Experience the Mediterranean in all its splendor — from storied coastlines and world-famous cultural capitals to quiet harbors known only to locals. Stroll sun-drenched promenades in legendary cities, uncover hidden corners where history lingers along timeworn cobblestoned streets, and anchor in tranquil coves far from the crowds. A Grand Voyage reveals this timeless region in a new light, where ancient customs and modern rhythms meet against a backdrop of sea, sun, and glamour.

---

## **GRAND SOUTH PACIFIC, 2026 – EXPEDITION VOYAGE**

Venture far beyond the familiar on a Silversea Grand Expedition to the remote islands and tropical shores of the South Pacific. Snorkel among vibrant coral reefs teeming with marine life, explore untouched landscapes where exotic wildlife thrives, and encounter remote cultures preserved across generations. Each day reveals a new facet of the natural world — from crystalline lagoons and volcanic atolls to lush rainforests and secluded beaches — immersing you in the wild and the wondrous.

---

## **GRAND SOUTH AMERICA, 2027 & 2028 – CLASSIC VOYAGE**

Circumnavigate a continent alive with astonishing biodiversity and rich heritage. Revel in the dazzling pageantry of Rio during Carnival, when music, dance, and color fill the streets in a celebration unlike any other. And follow in the footsteps of ancient civilizations across Latin America, exploring archaeological sites, well-preserved temples, and dynamic modern cities that weave the past and present together in a spellbinding tapestry. This is a voyage that welcomes discovery at every turn.

---

## **GRAND ASIA, 2028 – CLASSIC VOYAGE**

Discover Southeast Asia, East Asia, and Japan in exceptional depth, charting a route through lands where time-honored customs and dynamic modernity coexist in harmony. Wander through hallowed temples in Thailand, as incense drifts through sacred courtyards. Experience the vibrant energy of Malaysia's bustling capitals, alive with cultural fusion. Stand before China's imperial palaces and monuments, each etched with the stories of dynastic legacies. From serene shrines to glittering skylines, each destination reveals a new layer of Asia's diverse heritage.





## *Destination Experiences*

---

# THE WORLD WITHIN REACH

On land, discovery takes many forms. You might stand beneath Japan's delicate cherry blossoms on a guided nature walk, roam the ruins of an ancient civilization alongside an archaeologist in Greece, or taste your way through one of Brazil's iconic culinary capitals with a master chef. From legendary festivals alive with color and sound to thoughtfully designed City Stays by Silversea, each encounter offers fresh perspectives and genuine connections with the world and its people. Privileged access and expert guidance every step of the way lead to moments that linger long after your journey ends.



## IMMERSIVE EVENTS AND FESTIVALS

*Where memorable moments meet effortless comfort*

Some moments preserve the world's legacy — sacred traditions, natural marvels, and celebrations that transcend cultures. Our Immersive Events & Festivals invite you to embrace bucket-list experiences in unsurpassed comfort and style. These specialized voyages are designed around legendary events from historic festivals to fleeting wonders of nature. Feel the thrill of the Monaco Grand Prix from a private rooftop perched above the circuit. Welcome the New Year under the dazzling fireworks of Funchal or Hong Kong. Wander Japan beneath a canopy of cherry blossoms, or watch a solar eclipse cloak the Balearic Sea. With exclusive access, private transfers, and local insight, each experience is as seamless as it is surreal. Amidst the world's most cherished rituals, you discover that the real magic lies not in witnessing history, but in becoming part of it.



## LAND PROGRAMS BY SILVERSEA

*Extend your escape. Enhance your discovery*

The stories you tell for a lifetime are born in the moments you dared to venture further. Extend your escape seamlessly with Land Programs by Silversea and discover the soul of a destination on small-group excursions led by seasoned guides. Stand before the Great Wall of China, behold Alaskan wonders from the peaks of the Denali Summit, or wander through the sacred city of Machu Picchu. Throughout your journey, enjoy the Silversea standard of service at top-tier hotels with refined accommodations. In expertly curated experiences, destination specialists guide you through every facet and flavor, unveiling unexpected revelations that linger long after your voyage ends. With Land Programs by Silversea, explore beyond continents and coasts – into the heart of culture and legacy.

Contact the Silversea Reservation Team or your Travel Advisor to book.



BARCELONA, SPAIN

## CITY STAYS BY SILVERSEA

*Where every place tells a story*

Every city holds secrets — City Stays by Silversea unlocks hidden treasures on curated two-night experiences in cities where your voyage begins or ends. Stay in the heart of each destination at luxury hotels and explore legendary landmarks on small-group tours hosted by expert local guides eager to share insider perspectives. You'll enjoy privileged access to cultural wonders and culinary experiences that range from market visits and cooking classes to intimate chef's table encounters. With seamless transfers and the perfect balance of guided discovery and leisure time, every detail is handled, leaving you free to create authentic connections that transform cities into unforgettable stories.

Contact the Silversea Reservation Team or your Travel Advisor to book.

# SHORE EXCURSIONS ON CLASSIC VOYAGES



## HIGHLIGHT EXPERIENCES

Explore the world's most celebrated landmarks and cultural icons on half- or full-day excursions led by knowledgeable local guides. These thoughtfully arranged outings bring must-see attractions within easy reach.



## SIGNATURE EXPERIENCES

Step into the heart of a destination through curated encounters guided by local experts, from exclusive entry at special venues to authentic culinary moments ideal for travelers who value meaningful engagement.



## PRIVATE EXPERIENCES

Craft a day that's entirely your own with a dedicated vehicle, driver, and guide at your service. Perfect for families and small groups, these private excursions offer both intimacy and flexibility.



## CUSTOM EXPERIENCES

Let us bring your vision to life with experiences fully tailored to your interests. From specialized guides to behind-the-scenes access, our team curates every detail around your pace and preferences.



## OVERLAND EXPERIENCES

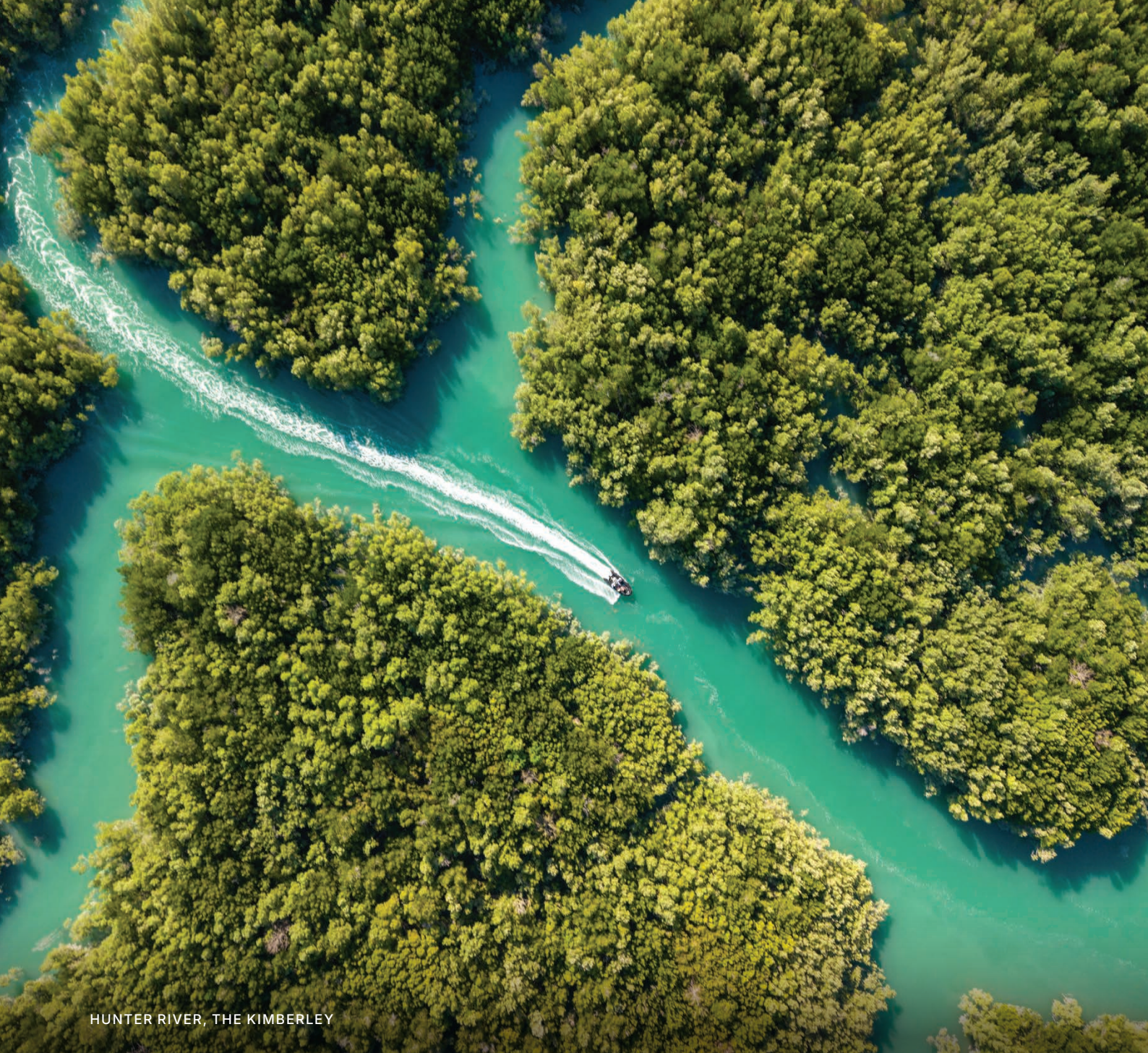
Venture inland on multi-day journeys to incredible sites such as the Taj Mahal or Angkor Wat, with flights, accommodations, and guided touring expertly arranged for an effortless experience.

*Available on select voyages.*



## ACCOMMODATIONS ON LAND

Extend your journey at outstanding hotels before or after your voyage. Handpicked accommodations and included transfers ensure a smooth transition between ship and shore.



HUNTER RIVER, THE KIMBERLEY

## GO FARTHER THAN EVER BEFORE

*Dive deeper into every destination*

Sail to the edges of the Earth on journeys that reveal untamed landscapes, diverse wildlife, and remote communities at close range. Silversea Expeditions blend all-inclusive comfort with deep exploration, carrying you into the hearts of polar deserts, verdant rainforests, and remote shores few will ever see. With more guides and Zodiacs per guest than any other cruise line, landings are seamless, and explorations are richer. Meanwhile, small ships and intimate excursions unlock access to spectacular, rarely visited sites.

# SHORE EXPLORATIONS ON EXPEDITION VOYAGES



## ZODIAC CRUISES

*Driven by discovery*

All our Expedition Experts are certified Zodiac® drivers, whose knowledge runs as deep as the seas they navigate. Cruise remote waterways and hidden inlets to come face-to-face with wild wonders, always adjusting to nature's rhythms.

## EXPERT-LED HIKES

*Nature, interpreted*

Venture beyond the horizon and uncover stories only the land can tell. Each carefully paced hike becomes a dialogue with nature as naturalists, historians, and botanists shed light on everything from geology to cultural sites.

## KAYAK ADVENTURES

*The current calls*

The magic happens at water level — gliding between icebergs, mangrove tunnels, or sea lions playing within arm's reach. Paddle alongside kayak guides trained to read the water, the stories it holds, and the landscapes surrounding it.

## SNORKELING EXCURSIONS

*Guided by underwater wisdom*

Snorkel coral kingdoms and crystalline coves under the supervision of in-water guides. Every excursion begins with a thorough briefing before unfolding into a guided exploration where vibrant species emerge, and their behaviors are explained.

## LOCAL EXPLORATIONS

*Connect with local cultures*

Gain a deeper understanding of each destination through the insight of local guides well-versed in the area's history and heritage. From village visits to artisan workshops, these experiences offer authentic perspectives while supporting local communities.

## HELICOPTER & FLIGHTSEEING

*Elevate your journey*

Take to the skies for aerial views of sparkling glaciers, untamed jungles, and volcanic peaks. In partnership with trusted operators, Silversea offers expertly guided flights that reveal otherwise unreachable landscapes.

## GLASS-BOTTOM BOATS

*Underwater wonders, revealed*

Aboard boats with transparent viewing panels, naturalists and marine biologists illuminate thriving ecosystems below, revealing the delicate interplay between aquatic life and their habitats.



PUERTO WILLIAMS, CHILE

# THE SOUTHERNMOST HOTEL ON EARTH

Navigate the frozen desert like brave explorers, while enjoying the warmth of uncompromised comfort. Starting in 2026, guests embarking on an Antarctica Fly Cruise will begin their Expedition with the signature Silversea hospitality — at The Cormorant at 55 South<sup>SM</sup>. Named after the unique location of the property and the resilient seabird known for extraordinary journeys, The Cormorant bestows good fortune on our guests embarking on their greatest adventure yet. The Southernmost Hotel on Earth<sup>SM</sup> offers unrivaled service and unparalleled access to the world’s most remote and remarkable destination: Antarctica. Dare to roam where few have followed and experience once-in-a-lifetime in a place untouched by time.



Included  
 Available for purchase via Silversea



# THE CORMORANT

AT 55 SOUTH



## REFINED COMFORT, RELAXING VIEWS

The Cormorant at 55 South offers 150 beautifully appointed rooms, inviting you to recharge before your most exciting adventure yet. Each room features serene forest views or tranquil water vistas — plus the flexibility of a king bed that can be converted to two beds, depending on your preference.



Images are intended as general reference. Features, materials, finishes and layout may be different than shown.



SILVER RAY, SAINT TROPEZ



## *Our Fleet*

---

# A FLEET FIT FOR EXCEPTIONAL JOURNEYS

Explore the world's most spectacular destinations on 12 exceptional ships that make every moment as rewarding as the shores you visit. Designed to reach the smallest harbors and the edges of the Earth, our Classic Voyages and Expedition ships take you straight to the heart of each region effortlessly — all while delivering the deeply personalized service and hospitality Silversea is known for.



SILVER RAY, PORTO SANTO STEFANO

## CLASSIC FLEET

*Elegant sanctuaries between iconic shores*

Our ocean fleet caters to those who cherish life's finest pleasures, offering an indulgent, resort-like experience at sea. Each all-suite ship is a haven of comfort, with spacious private verandas, rejuvenating wellness programs, and a world-class spa. Taste global flavors across menus developed by Michelin-starred chefs and casual al fresco concepts that complement each course with breathtaking views. Elevated enrichment programs, exhilarating entertainment, and thoughtful, destination-inspired details heighten the thrill of exploration in between discoveries onshore.

# NOVA CLASS

*Ships that redefine discovery*



POOL DECK, SILVER RAY

The Nova Class introduces a new era of exploration with Silversea. Featuring a revolutionary 270° design, expansive decks, and spacious suites with panoramic views, *Silver Nova* and *Silver Ray*® blur the line between ship and sea. Marvel at sapphire waters and endless horizons from the infinity whirlpool, savor Golden Hour from a seat at Dusk Bar, and dine beneath starry skies at The Marquee. With globally inspired restaurants, extensive glass façades that bring the outdoors in, and our widest selection of suites, our newest and most innovative ships redefine how you see the world – connecting you seamlessly with the world around you.



WILHELMINA BAY, ANTARCTICA

## EXPEDITION FLEET

*Ships that redefine discovery*

The Silversea Expedition fleet is purpose-built to take you farther, unlocking the planet's most remote frontiers. Four state-of-the-art ships, ice class or specially designed, venture where few can follow — from the volcanic calderas of the Galápagos to Greenland's glacial fjords, and deep into both poles. With the industry's largest Zodiac fleet and small-group excursions led by Expedition Experts, every landing is utterly extraordinary. On board, discovery continues in the ships' Observation Lounges, fascinating lectures, and thoughtfully designed suites, seamlessly blending comfort and exploration — even at the ends of the Earth.

# SILVER ENDEAVOUR

*Engineered for off-the-grid polar Expeditions*



SILVER ENDEAVOUR, ANTARCTICA

*Silver Endeavour* redefines elite expedition cruising, breaking boundaries to take you deeper into breathtaking polar regions. Its state-of-the-art technology coexists seamlessly with all-suite accommodations, elegant dining venues, and world-class amenities to explore the Arctic and Antarctica in unmatched style and comfort. Accommodating just 220 guests and 207 crew, *Silver Endeavour* offers one of the highest crew-to-guest ratios in Expedition cruising — delivering unparalleled service as you discover polar landscapes.

# CLASSIC FLEET



SILVER MOON, HONG KONG

## NOVA CLASS

Our newest class, these innovative ships offer the most complete voyage experience ever with visionary architecture and pioneering technology.



SILVER RAY®

544 Crew / 728 Guests  
Built 2024



SILVER NOVA®

544 Crew / 728 Guests  
Built 2023

## MUSE CLASS

Representing the essence of immersive travel, Muse Class offers incredible onboard experiences and exceptional public spaces, including an outstanding array of dining options.



SILVER MUSE®

411 Crew / 596 Guests  
Refurbished 2025



SILVER DAWN®

411 Crew / 596 Guests  
Built 2021



SILVER MOON®

411 Crew / 596 Guests  
Built 2020



SILVER SPIRIT®

411 Crew / 608 Guests  
Refurbished 2018

## SHADOW CLASS

Shadow Class ships feature a uniquely spacious and timeless design with the rare ability to travel right to the heart of a city.



SILVER WHISPER®

302 Crew / 392 Guests  
Refurbished 2024



SILVER SHADOW®

302 Crew / 392 Guests  
Refurbished 2019

# EXPEDITION FLEET



SILVER WIND, ANTARCTICA

## SILVER WIND & SILVER CLOUD

The ultimate crossovers, these ships combine superlative comfort and diverse dining options with amenities that take your onboard experience to the next level.



### SILVER WIND®

239 Crew / 274 Guests  
Refurbished 2021



### SILVER CLOUD®

212 Crew / 254 Guests  
Refurbished 2017

## SILVER ORIGIN

The most intimate ship in elite Expedition travel, *Silver Origin* delivers deeply immersive experiences in The Galápagos.



### SILVER ORIGIN®

90 Crew / 100 Guests  
Built 2020

## SILVER ENDEAVOUR

Purpose-built for polar exploration, *Silver Endeavour* is the most advanced ship in Expedition voyaging, pairing state-of-the-art technology with hyper-personalized service and unparalleled comfort.



### SILVER ENDEAVOUR®

207 Crew / 220 Guests  
Built 2021



SILVER NOTE, SILVER RAY

## SO MUCH TO SAVOR

Dining with Silversea is an immersive, inclusive experience that transforms meals into opportunities for discovery. With up to nine distinct restaurants, our fleet offers large-ship variety with small-ship intimacy – from haute French and Japanese classics to Neapolitan-style pizza. Every restaurant sets a unique mood, while select culinary experiences draw on regionally sourced ingredients and collaborations with local chefs. From refined seafood at Atlantide and handmade pastas at La Terrazza to small plates paired with live music at Silver Note, our restaurants reflect the world – delivering the most inspiring culinary journeys at sea.



## DRINKS THAT RAISE THE BAR

Our bars and lounges are the social heartbeat of life on board, from the grind of fresh coffee at dawn to the pop of Champagne at dusk. Talented baristas at Arts Café craft flawless caffeinated creations throughout the day, while jazz musicians at Panorama Lounge provide the perfect soundtrack for elegant nightcaps and late-night celebrations. Premium spirits, fine wines, and cocktails are included across all venues — even in-suite — showcasing world-class mixology and regionally sourced ingredients. Guided tastings, interactive cocktail sessions, and mixology classes further elevate every sip into shared experiences — set to the perfect soundtrack for conversation, relaxation, or revelry.



## THE FLAVORS OF S.A.L.T. SEA AND LAND TASTE

### *Culture Through Cuisine*

Unique to Silversea, S.A.L.T. Sea And Land Taste® is a multi-faceted culinary program that allows you to explore a destination's cultural identity through food, even when you are on board. An ever-changing menu at S.A.L.T. Kitchen invites you to savor dishes reflecting the cuisine of the region you are exploring, and S.A.L.T. Bar serves locally inspired cocktails crafted by expert mixologists\*. By day, hands-on classes are offered at S.A.L.T. Lab, a venue that enhances cultural understanding through cooking traditions. And each evening, the space transforms into the S.A.L.T. Chef's Table, a reservations only showcase of our chefs' creative expression. The enrichment continues with S.A.L.T. Experiences, allowing you to explore culinary artistry and history ashore with local chefs and vintners. On board, join us for S.A.L.T. Talks, conversational lectures that offer insight into a cuisine's influence on culture, from ancient times to modern day.



### S.A.L.T. KITCHEN

*Bite into new destinations*

S.A.L.T. Kitchen offers an ever-changing destination-inspired menu, featuring regional specialties and local flavors. Paired with over 160 regional wines, it provides a comprehensive culinary journey at sea.



### S.A.L.T. BAR

*Destinations, distilled*

S.A.L.T. Bar offers complimentary regionally inspired cocktails, blending local ingredients and spirits. Each drink tells the story of the destination, inviting conversation and capturing the essence of your journey.



### S.A.L.T. LAB

*Cook, learn, connect*

S.A.L.T. Lab offers complimentary hands-on cooking classes with local techniques and traditions. Led by S.A.L.T. Lab Hosts, you'll learn recipes and cultural stories, turning your home kitchen into a journey's delicious encore.



### S.A.L.T. CHEF'S TABLE

*Culinary artistry, unleashed*

S.A.L.T. Chef's Table offers a nightly, 11-course small plate experience, blending local ingredients with regional classics. You're invited to enjoy an intimate, welcoming gathering where artistry meets authenticity and creates lasting culinary memories.



### S.A.L.T. EXPERIENCES

*Taste beyond boundaries*

S.A.L.T. Experiences offer far-reaching trips into local food cultures led by regional experts — from farms to markets to private kitchens. Harvest, learn, and savor experiences that turn flavors into memories and strangers into friends.



### S.A.L.T. TALKS

*Food stories, cultural insights*

S.A.L.T. Talks showcase food, history, and culture via free onboard lectures and demos. Led by experts, these sessions reveal how regional dishes reflect tradition, migration, and innovation — enriching your dining and exploration experience.

S.A.L.T. Kitchen and S.A.L.T. Bar are available on *Silver Dawn*, *Silver Nova*, *Silver Ray*, and *Silver Muse*. S.A.L.T. Lab is available on *Silver Dawn*, *Silver Nova*, and *Silver Ray*. S.A.L.T. Chef's Table is available exclusively on *Silver Nova* and *Silver Ray* for \$180 per person. S.A.L.T. Experiences are available on all Classic ships, with experiences tailored to each region's unique culinary heritage.



THE VENETIAN LOUNGE, SILVER NOVA

## ONBOARD ENTERTAINMENT

*The stage is set for discovery*

During a Silversea voyage, every moment promises enrichment, connection, and captivating entertainment. From dance classes and arts and crafts to table tennis and pickleball, there's an activity for every interest. Pair recreation with revelation as intellectually engaging experiences fill each day with new discoveries. Talks by chefs, scientists, and cultural icons offer deeper insight into the places you visit, while hands-on workshops bring learning to life. Spectacular original productions and a mix of global and local talent enliven every evening, with music and performances tailored to your journey. A vibrant calendar of social events — from Champagne brunches to themed deck parties — further enhances each voyage, inspiring lasting friendships as you explore the world.



# FIND YOUR CENTER AT SEA

Rooted in balance, tranquility, and vitality, our spa program offers personalized pathways to inner calm. From sunrise yoga sessions and ocean-view fitness classes to restorative rituals, well-being is seamlessly woven into every voyage.



## PERSONALIZE YOUR PAMPERING

Shape your own journey to well-being with flexible offerings that include private fitness instruction, bespoke beauty consultations, expert-led nutrition workshops, and engaging group activities.



## NOURISH YOUR BODY AND MIND

Savor culinary offerings that support a mindful lifestyle with nutrient-rich, plant-based dishes, personalized dietary options, and fresh beverages such as cold-pressed juices, protein blends, and kombucha.



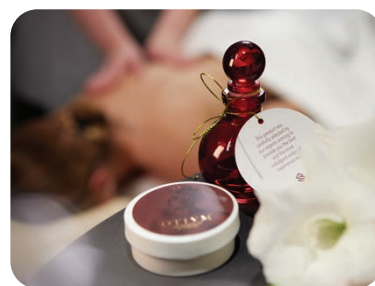


## INDULGE IN OTIUM INSPIRED RITUALS

Guided by the Roman philosophy of *otium* – indulgence and leisure as a path to well-being – our spa program elevates self-care through revitalizing treatments, in-suite bath rituals, and wholesome gourmet dining.

## UNWIND BEYOND TRADITIONAL SPACES

Relaxation extends far beyond the spa on our ships. From serene, beautifully designed areas to lavish in-suite rituals and thoughtfully crafted menus, every environment invites rest, restoration, and rejuvenation.



## PURSUE VITALITY WITH A VIEW

Motivation comes easy at fitness centers that combine cutting-edge equipment and technology, expert-led classes, and spectacular sea views from both indoor and outdoor exercise spaces.



Otium is available on *Silver Nova*, *Silver Ray*, and *Silver Dawn*. The program is also featured on *Silver Endeavour* and *Silver Moon*.

# TAILORED JOURNEYS, ALL-INCLUSIVE FARES

## *The Luxury of Choice*

Exceptional service and personalized attention are what define Silversea – and our three distinct fares deliver on that promise. The All-Inclusive Fare features all the onboard amenities and services for which we are known. For additional benefits such as a Shore Excursion Credit and a refundable deposit, there's the All-Inclusive Plus Fare. Or choose the Last-Minute Fare to enjoy the same all-inclusive experience – available on select sailings within five months of departure. Purchase pre- and post-voyage air, hotel, transfers, and extended Land Experiences through Silversea for a seamless travel experience.

	ALL-INCLUSIVE PLUS FARE	ALL-INCLUSIVE FARE	LAST-MINUTE FARE
<b>YOUR BOOKING BENEFITS</b>			
Shore Excursion Credit on Classic Voyages <sup>1</sup>	✓		
Refundable deposit	✓		
Flexible cancellation schedule	✓	✓	
Silversea Fare Guarantee Program	✓		
Seamless Air, Hotel & Transfers available for purchase via Silversea	✓	✓	✓
Land Experiences available for purchase via Silversea	✓	✓	✓
Most affordable option, available on select voyages within five months of departure			✓
<b>INCLUSIONS &amp; AMENITIES</b>			
Spacious all-suite, butler-serviced accommodations	✓	✓	✓
Personalized service – nearly one crew member for every guest	✓	✓	✓
Up to 6 dining options and 24-hour in-suite dining <sup>2</sup>	✓	✓	✓
Unlimited pour of champagne, fine wines, spirits, and specialty coffees	✓	✓	✓
<b>Expedition exclusive:</b> Charter flights & pre/post-cruise hotel(s) <sup>3</sup>	✓		✓
<b>Expedition exclusive:</b> Expert lectures, guided Zodiac <sup>®</sup> , land & sea tours	✓		✓
<b>Expedition exclusive:</b> Expedition gear such as parka, backpack & water bottle <sup>4</sup>	✓		✓
Wi-Fi, enrichment lectures, and onboard entertainment	✓	✓	✓
City center transportation for Classic Voyages <sup>3</sup>	✓	✓	✓
Onboard gratuities, port taxes, and fees	✓	✓	✓

<sup>1</sup>Amount varies by departure. Shore Excursion Credit can be applied as needed | <sup>2</sup>Number of dining options varies by ship | <sup>3</sup>When required by destination | <sup>4</sup>Included Expedition gear varies by region and departure | While Silversea strives to serve all listed items, some may be subject to availability or excluded in certain destinations, such as Galápagos. Expedition Voyages do not include All-Inclusive Fare. The Luxury of Choice is a trademark of Silversea Cruises.

# ADD THESE TO ANY SILVERSEA VOYAGE

Book your air, hotel, transfers, Shore Excursions, and Land Experiences through Silversea for a seamless journey — with every detail expertly arranged for your comfort and convenience.



## SEAMLESS AIR & TRANSFERS

Entrust your air travel arrangements to our dedicated specialists for a worry-free journey from beginning to end. When you purchase your flights through Silversea, you'll enjoy the assurance of seamless coordination between the airport and your ship.



## HOTELS & TRANSFERS

Extend your travels with carefully selected accommodations before or after your voyage. Your reservation includes transfers between your hotel and ship for pre-cruise stays, and/or from the ship to the hotel for post-cruise accommodations.



## LAND EXPERIENCES

Extend your voyage by adding Land Programs and City Stays by Silversea before or after your cruise. Or embark on a mid-cruise Overland Experience to visit regional sites not accessible on your itinerary.



## SHORE EXCURSIONS

Our expertly crafted Shore Excursions deliver privileged access to authentic cultural treasures and natural wonders while offering diverse options tailored to every interest and desired level of immersion on Classic Voyages.



# VENETIAN SOCIETY

*An exclusive circle of Silversea family members*

Venetian Society is the Silversea rewards and recognition program that offers our members exclusive access, booking benefits and onboard privileges. It is a club that travels, but it is no ordinary club. It is a community of fellow global travelers who share a desire to explore the world in luxurious fashion as they collect lifelong experiences along the way.

Members accumulate Venetian Society Days on each voyage (1 VS Day per day sailed), and the more you travel the more benefits you can look forward to.

## MEMBERSHIP PRIVILEGES AND MILESTONE REWARDS

Venetian Society benefits are our way of thanking you for your loyalty. Members are also invited to our annual Venetian Society Reunion Voyage featuring special events and activities exclusively designed for our members only.

BENEFIT	1VS DAY	100 VS DAYS	250 VS DAYS	350 VS DAYS	500 VS DAYS
Pre-Sale Access to New Itineraries	•	•	•	•	•
Access to VS Events on Reunion Voyage	•	•	•	•	•
5% off Venetian Society Sailings	5%	5%	5%	5%	5%
VS Member Savings on All Future Sailings		5%	10%	10%	10%

## ONBOARD

Venetian Society Party	•	•	•	•	•
Complimentary Laundry & Pressing		•	•	•	•
Upgrade Champagne Welcome in Suite <sup>^</sup>			•	•	•
Complimentary Cruise <sup>^</sup>				7-Day Cruise	14-Day Cruise

Plus Complimentary 7-Day Cruise every 150 VS Days after 500 VS Days

<sup>^</sup>Complimentary Cruises and Upgraded Champagne Welcome are excluded from the Loyalty Status Match program, and can only be earned with days sailed on Silversea. For complete Venetian Society details visit <https://www.silversea.com/other-resources/venetian-society.html>



# STATUS WITHOUT BOUNDARIES

*Enjoy one-for-one tier matching across Silversea, Royal Caribbean, and Celebrity Cruises\**

Your loyalty now takes you even further. Through our Loyalty Status Match, Silversea Venetian Society members receive one-for-one tier matching across all three Royal Caribbean Group brands: Silversea, Royal Caribbean, and Celebrity Cruises. This shared recognition means your status – and the privileges that come with it – travel with you. Enjoy greater access, more benefits, and more ways to explore the world across a fleet of over 50 ships sailing to nearly 1,000 destinations.



VENETIAN SOCIETY	CROWN & ANCHOR SOCIETY	CAPTAIN'S CLUB
1 VS Day	Gold	Classic
100 VS Days Match with Platinum	Platinum & Emerald	Select Match with Platinum
250 VS Days	Diamond	Elite
350 VS Days	Diamond Plus	Elite Plus
500 VS Days	Pinnacle Club	Zenith

\*Restrictions apply

\*Since Loyalty Status Match members only receive the Member Level and not the Cruise Points, they are ineligible for the Crown & Anchor Society benefits listed: Complimentary Pinnacle Club milestone cruises, Diamond Plus and Pinnacle Club amenities, Single supplement cruise fare reduction, Cheers with an Officer onboard event, Milestone recognition (Crystal Block), Upgraded bathroom amenities, Pinnacle Club milestone kits, Chef's Choice amenity. \*Since Loyalty Status Match members only receive the Member Level and not the Club Points, they are ineligible for the Captain's Club benefits listed: Complimentary Zenith cruises, Zenith milestone kits, WWF® donations, Retreat Lounge access when not staying in the Retreat (status match members will only be permitted to access the Retreat Lounge when not staying in the Retreat based on availability and at the sole discretion of Celebrity Cruises) \*Since Loyalty Status Match members only receive the Member Level and not the associated VS Days, they are ineligible for the Venetian Society benefits listed: Complimentary cruises, Milestone recognition, "Sail with Us" referral offer prior to first Silversea voyage. Eligibility and participation in the Loyalty Status Match Programme are subject to the programme terms and conditions, which can be found at [www.silversea.com/loyaltyterms](http://www.silversea.com/loyaltyterms). For more information on the Loyalty Status Match Programme, please visit [www.silversea.com/loyaltymatch](http://www.silversea.com/loyaltymatch). We've updated our Venetian Society programme terms to better explain how we share our information across our brands. For details, please visit [www.silversea.com/loyaltyterms](http://www.silversea.com/loyaltyterms).

Für Silversea Kreuzfahrten gibt es Experten: uns!



Atlantis Reisen GmbH Am Stadtgraben 19  
31515 Wunstorf/Hannover  
Tel. 05031-95420 / Fax 05031-912013  
E-Mail: [info@atkf.de](mailto:info@atkf.de)  
Internet: [www.silversea-kreuzfahrten.de](http://www.silversea-kreuzfahrten.de)



For reservations contact your travel advisor

Cover images  
Top: *Silver Endeavour*, Antarctica  
Bottom: Athens, Greece